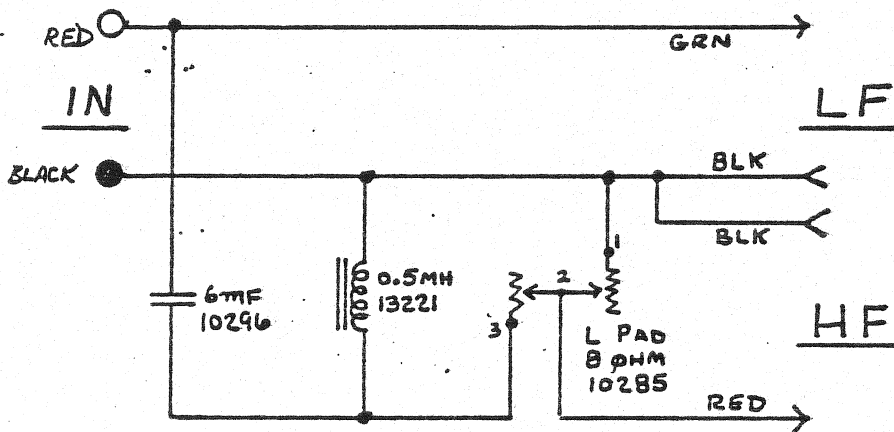


SPECIFICATIONS: NOTE ①

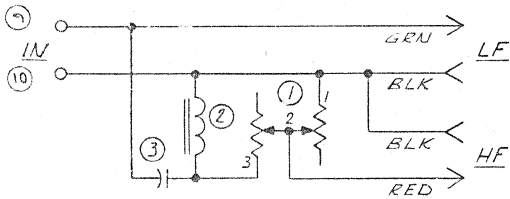
LOAD Z	LOW PASS	CROSS OVER	HIGH PASS	ATTENUATION
8	1.5KHZ		3KHZ	3KHZ
	LF 0 HF -11		LF 0 HF -1.5	VAR

CIRCUIT:

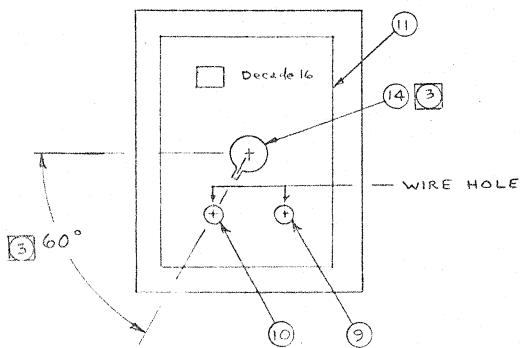


NOTES:

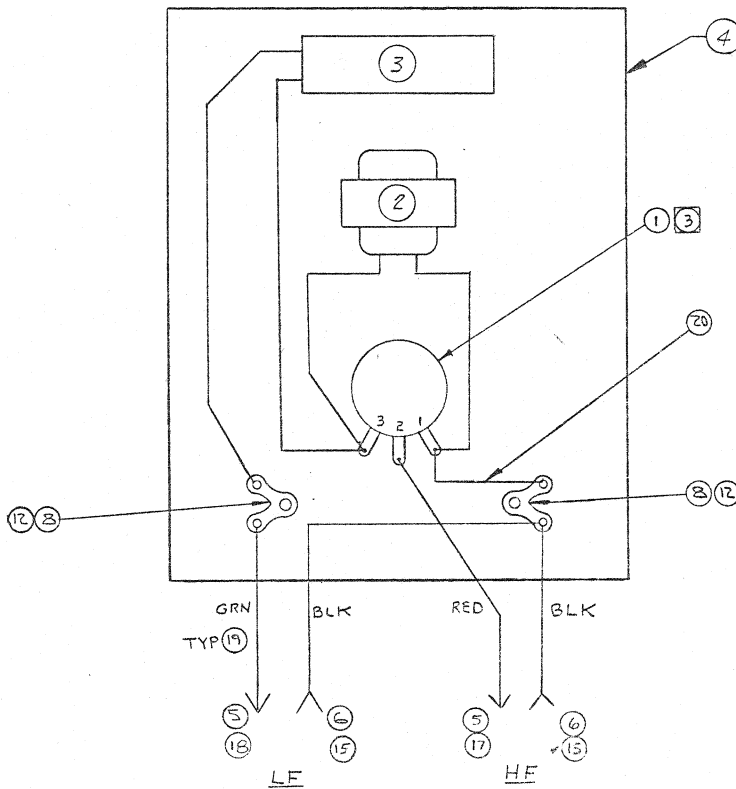
- ① USE STANDARD TEST FIXTURE



SCHEMATIC DIAGRAM



FRONT VIEW



WIRING DIAGRAM

ITEM	P/N	DESC	QTY
1	10285	L-PAD, 8Ω	1
2	13221	INDUCTANCE COIL 0.5 MH	1
3	10296	CAP, 6 MUF	1
4	53013	TERML BOARD 50291 MRD	1
5	50473	TERMINAL, MALE	2
6	50289	TERMINAL, FEMALE	2
7			
8	10241	SOLDER LUG	2
9	10243	BINDING POST, RED	1
10	10244	BINDING POST, BLACK	1
11	53026	FOILCAL	1
12	10811	SCREW 6-32x3/8 PANHD PH	2
13			
14	53027	KNOB	1
15	37631	WIRE, BLK, 16"MRD 37055	2
16			
17	37956	WIRE, RED, 16"MRD 37050	1
18	37891	WIRE, GRN, 16"MRD 37051	1
19			
20	118725	JUMPER	1

3 ITEM 14 TO BE INSTALLED AS SHOWN WHEN SHAFT OF ITEM 1 IS ROTATED FULL CCW. TOP OF KNOBS TO BE 23/32 ± 0.005 ABOVE ITEM 4.

2. REFER TO TEST SPECS # 3037 REF.
 1. ITEMS 2 & 3 BONDED TO ITEM 4 WITH 501826 ADHESIVE (HOT MELT).

REV	DATE	BY	APP	DESCRIPTION	QTY	MODEL	NEXT DWG	APPLICATION
1	3/5/63	WJ		REV PER EO				
2	6/74/63	WJ		REV WIRES PER E.O.				
3	6/74/63	WJ		CLARIFY PER CM				
4	4/74/63	WJ		REL. FOR PROD.				

UNLESS OTHERWISE SPECIFIED DIMENSIONS ARE IN INCHES. BREAK SHARP EDGES 0.015		DRAWN: 13 Feb 63	TITLE: MED ITEM / SALES MODEL N16
DECIMALS: .XX ± .01	FRACTIONS: 1/2 ± 1/32	CHECK: 4/10/63	JBL JAMES B. LANSING SOUND Inc. Los Angeles, Calif. 90039
TIP: 0	MATERIAL: N16	ENGR:	SIZE: MED ITEM / SALES MODEL N16
TREATMENT:	MACHINE FINISH: V	APPR:	DRAWING NUMBER: 53021
DO NOT SCALE DRAWING		SCALE:	WEIGHT: SHEET 1 OF 1